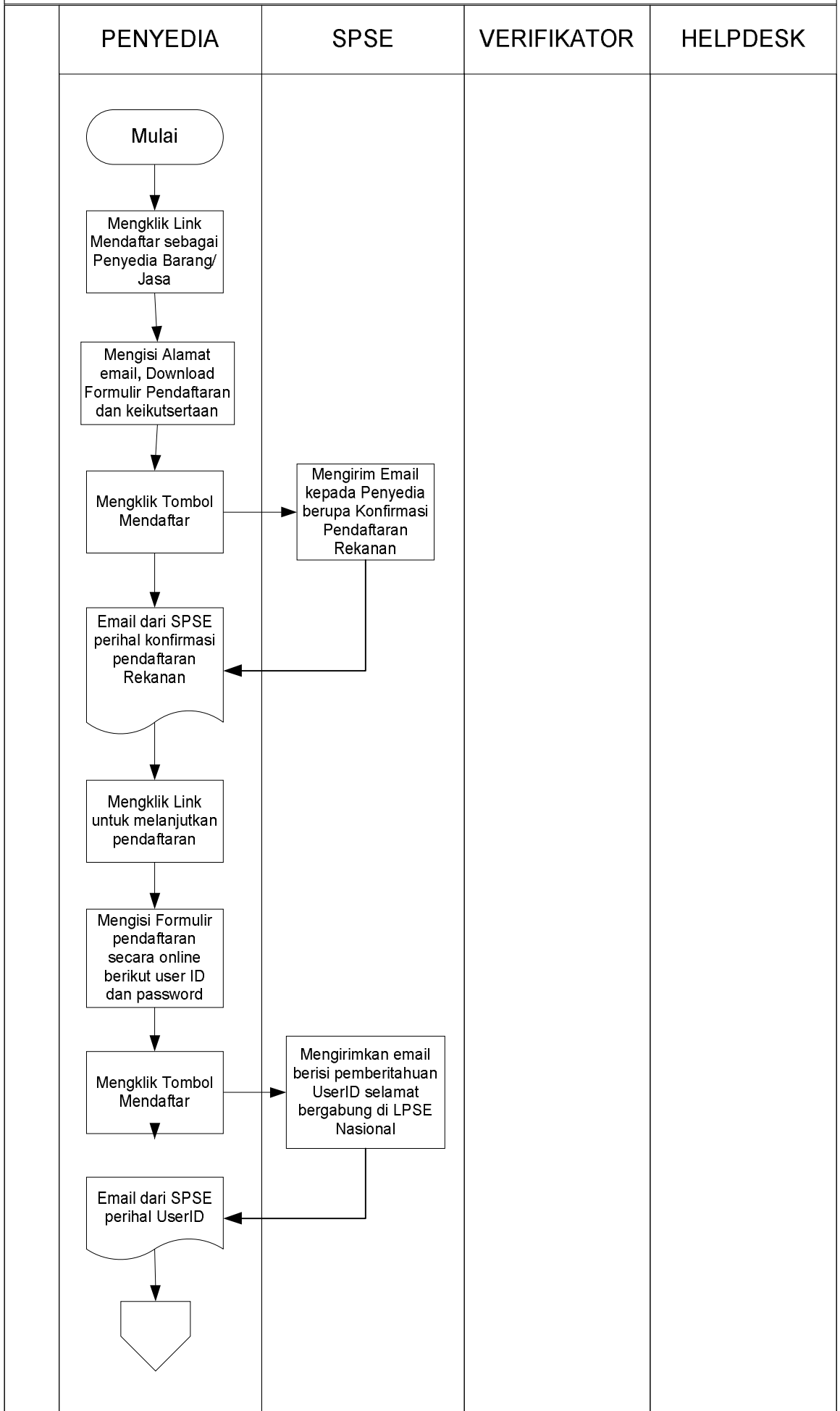
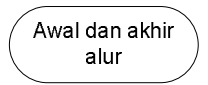
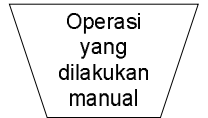
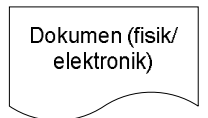
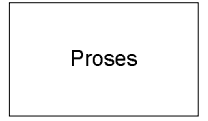


STANDAR OPERASIONAL PROSEDUR (SOP) LPSE KAB LUWU

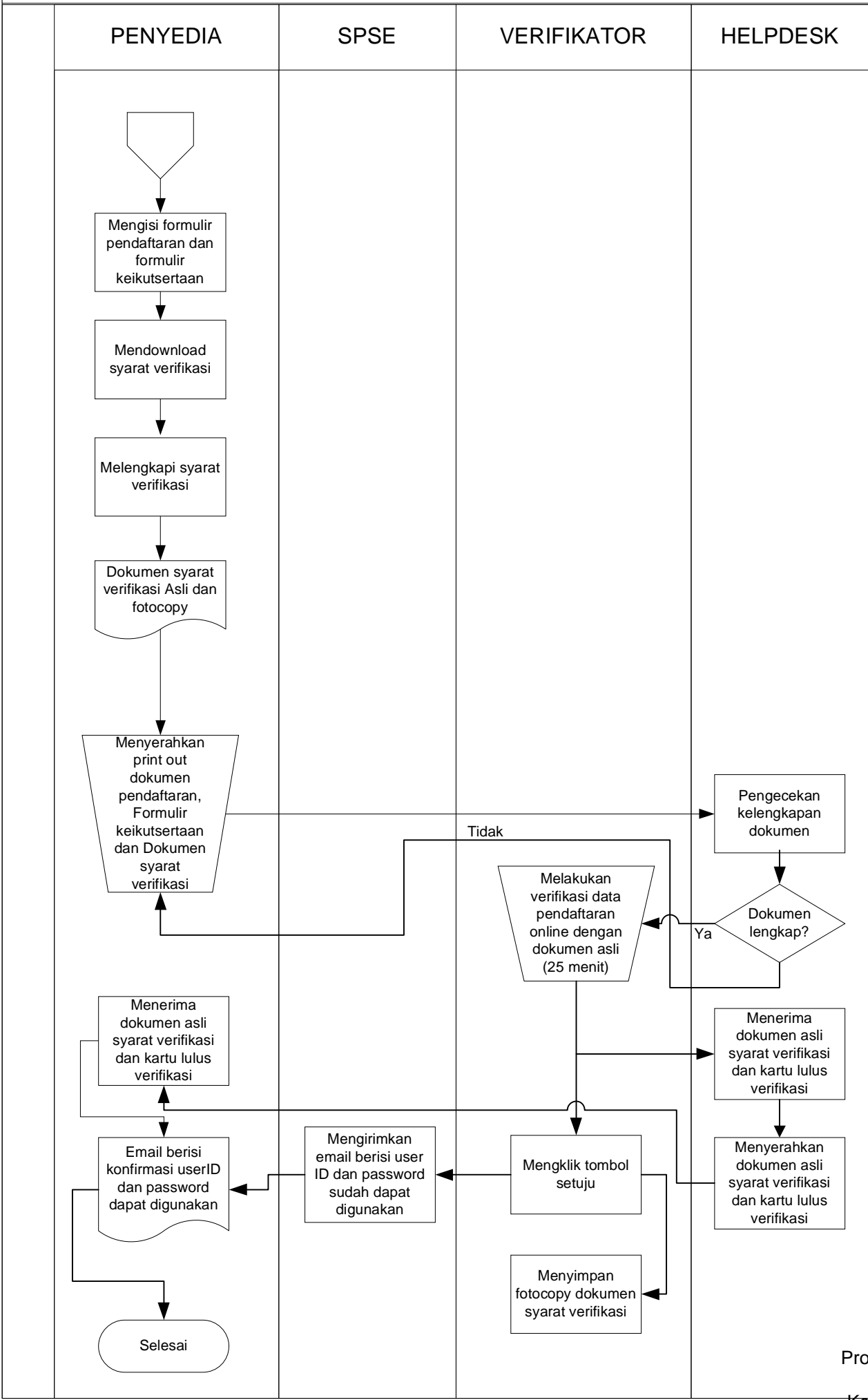
Registrasi dan Verifikasi Penyedia [1]



Keterangan :



Registrasi dan Verifikasi Penyedia [2]



Kabag Humas & Protokol Setdakab Luwu Selaku Ketua LPSE Kab.Luwu

ttd

Anwar Usman, S.Sos.M.Si
NIP : 19631231 198512 1 032